

2, 2.5 & 3 BHK Modern Luxury Apartments @ Miyapur



Aspire Spaces is a flourishing real estate development organization that strives to deliver projects of the highest quality and workmanship. The experienced founders of Aspire Spaces started the company with the sole intention of providing exceptional real estate spaces to every customer by working and partnering with the best architects, interior designers, landscape specialists, and a host of other experts. The company's intense focus on customer satisfaction through quality, consistency, and sustainability is what sets them apart from the rest.

AN APARTMENT THAT KEEPS GIVING MORE TO LIFE



LIVE THE LIFE YOU
TRULY DESERVE



A HOME THAT
KEEPS ON GIVING



A SPACE THAT ADDS VALUE
TO YOUR LIFE



MASTER PLAN

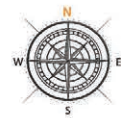
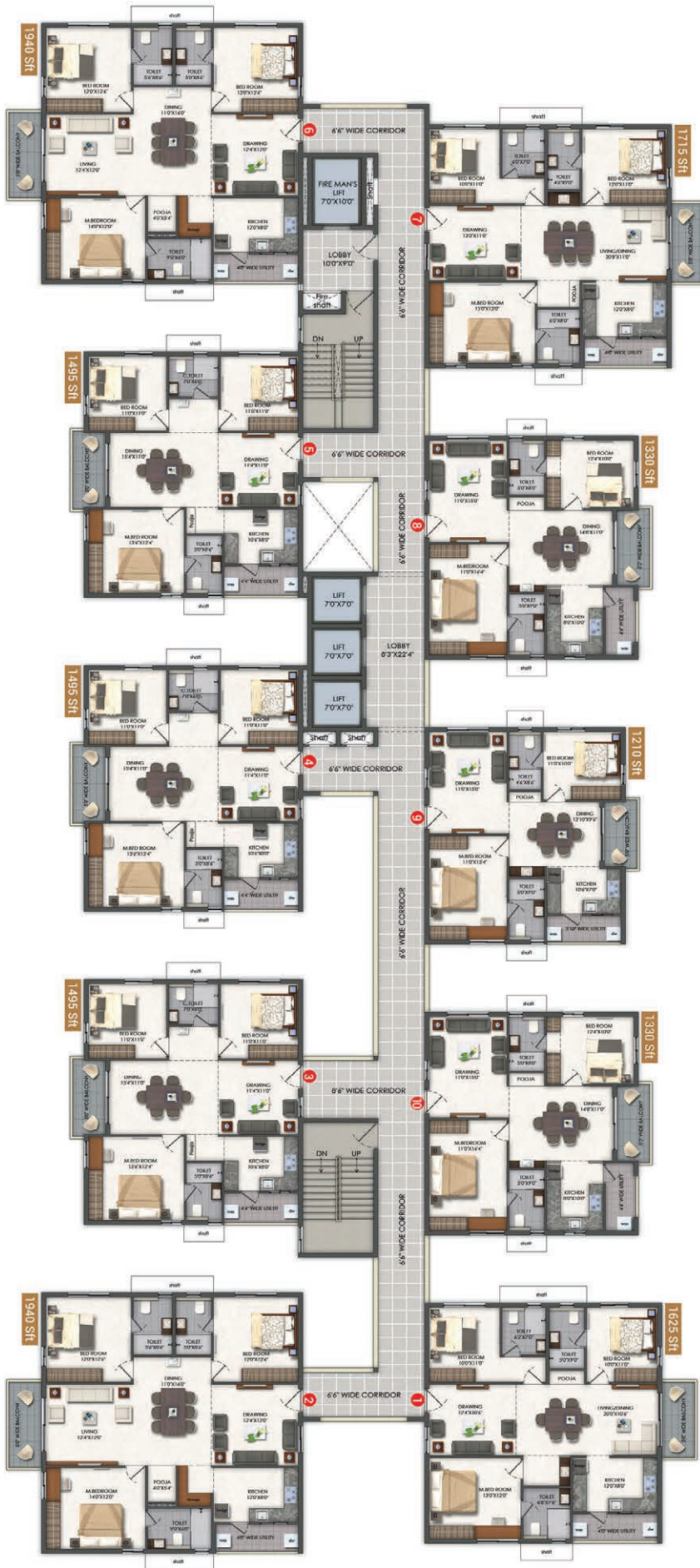


LEGEND

1. Entry & Exit 2. Arrival Zone 3. Central Courtyard Landscape Area 4. Landscape Pockets Along Driveway
 5. Seating / Exercise Court Along Buffer Walkways 6. Road Widening Area With Pathway And Passive Activities
 7. Transformer Unit 8. Basketball Court 9. Outdoor Gym 10. Children's Play Area 11. Transitional Tree Court
 12. Pavilion 13. Lawn Area 14. Periphery Screen Planting 15. 7M Wide Internal Driveway 16. Seating Below
 Focal Tree 17. Congregational Court With Stepped Seating 18. Multi-purpose Passive Lawn For Spill Over From
 Clubhouse or Yoga or Other Passive Activity 19. Club Lawn For Parties 20. Reflexology Pathway With Seating
 Pockets And Green Avenue 21. Multi-purpose Court For Volleyball / Box Cricket

Project Overview

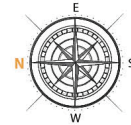
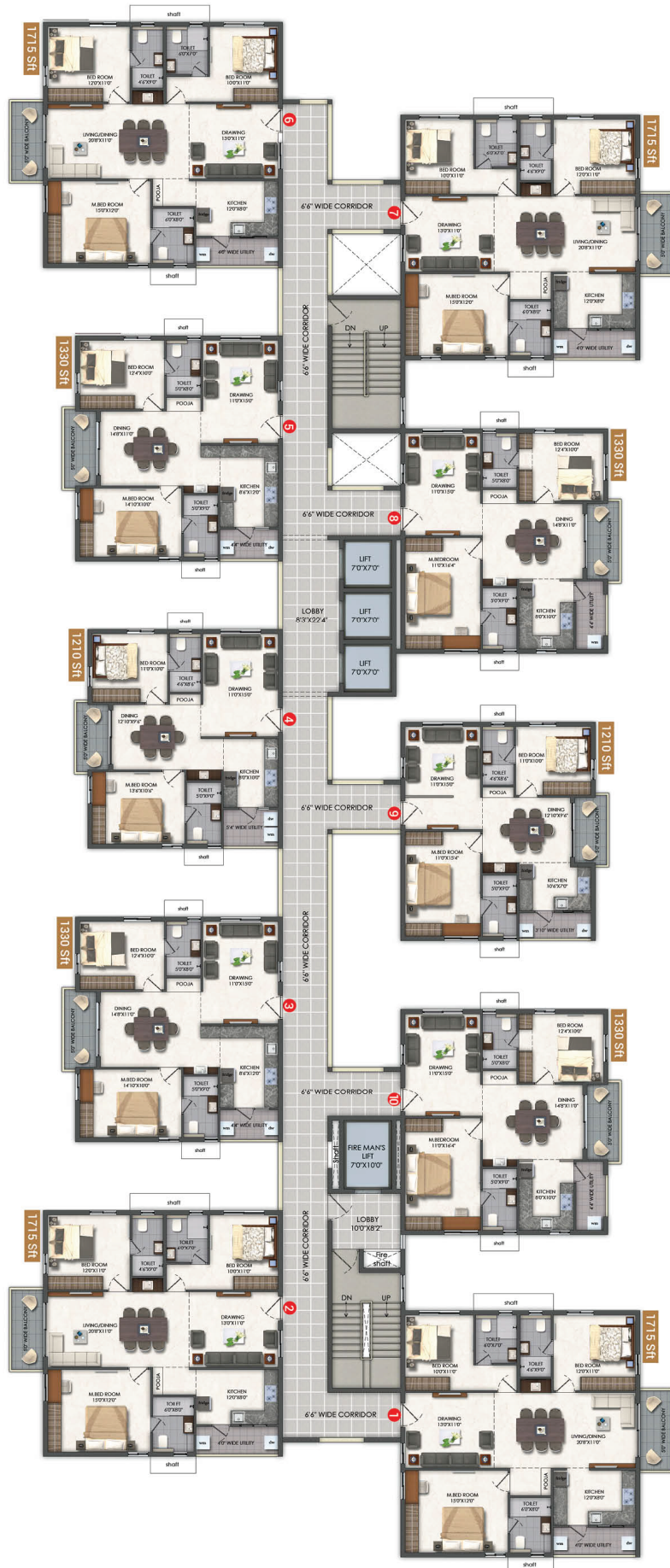
Extent	: 10 Acres
Blocks	: 9 Blocks
Number of Floors	: 13
Number of Units	: 1066
Type of Flats	: 2, 2.5, 3BHK
2BHK (Sft)	: 1210, 1330
2.5BHK (Sft)	: 1495
3BHK (Sft)	: 1625, 1715, 1940



Block A & G
(Typical Area Statement)

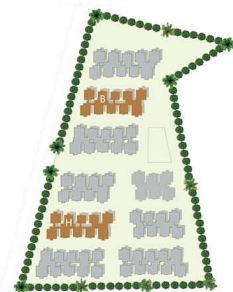
Flat No	Area (sft)	Facing	BHK
1	1625	WEST	3 BHK
2	1940	EAST	3 BHK
3	1495	EAST	2.5 BHK
4	1495	EAST	2.5 BHK
5	1495	EAST	2.5 BHK
6	1940	EAST	3 BHK
7	1715	WEST	3 BHK
8	1330	WEST	2 BHK
9	1210	WEST	2 BHK
10	1330	WEST	2 BHK





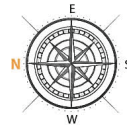
Block B & H (Typical Area Statement)

Flat No	Area (sft)	Facing	BHK
1	1715	WEST	3 BHK
2	1715	EAST	3 BHK
3	1330	EAST	2 BHK
4	1210	EAST	2 BHK
5	1330	EAST	2 BHK
6	1715	EAST	3 BHK
7	1715	WEST	3 BHK
8	1330	WEST	2 BHK
9	1210	WEST	2 BHK
10	1330	WEST	2 BHK



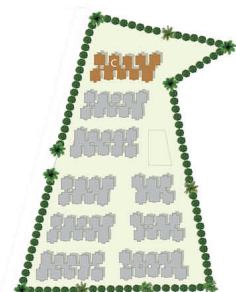


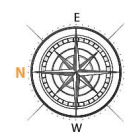
THERE'S
MORE TO
LIFE AT
AMEYA



Block C (Typical Area Statement)

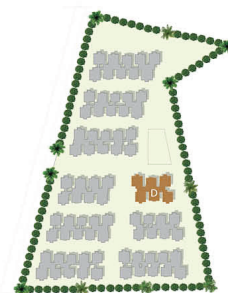
Flat No	Area (sft)	Facing	BHK
1	1940	WEST	3 BHK
2	1715	EAST	3 BHK
3	1330	EAST	2 BHK
4	1210	EAST	2 BHK
5	1330	EAST	2 BHK
6	1715	EAST	3 BHK
7	1940	WEST	3 BHK
8	1625	WEST	3 BHK
9	1330	WEST	2 BHK
10	1625	WEST	3 BHK





Block D
(Typical Area Statement)

Flat No	Area (sft)	Facing	BHK
1	1940	WEST	3 BHK
2	1715	EAST	3 BHK
3	1495	EAST	2.5 BHK
4	1715	EAST	3 BHK
5	1940	WEST	3 BHK
6	1495	WEST	2.5 BHK



CELEBRATE

LIFE & CULTURE

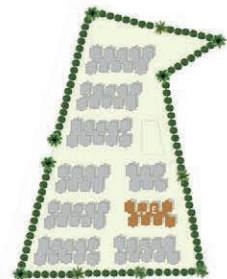


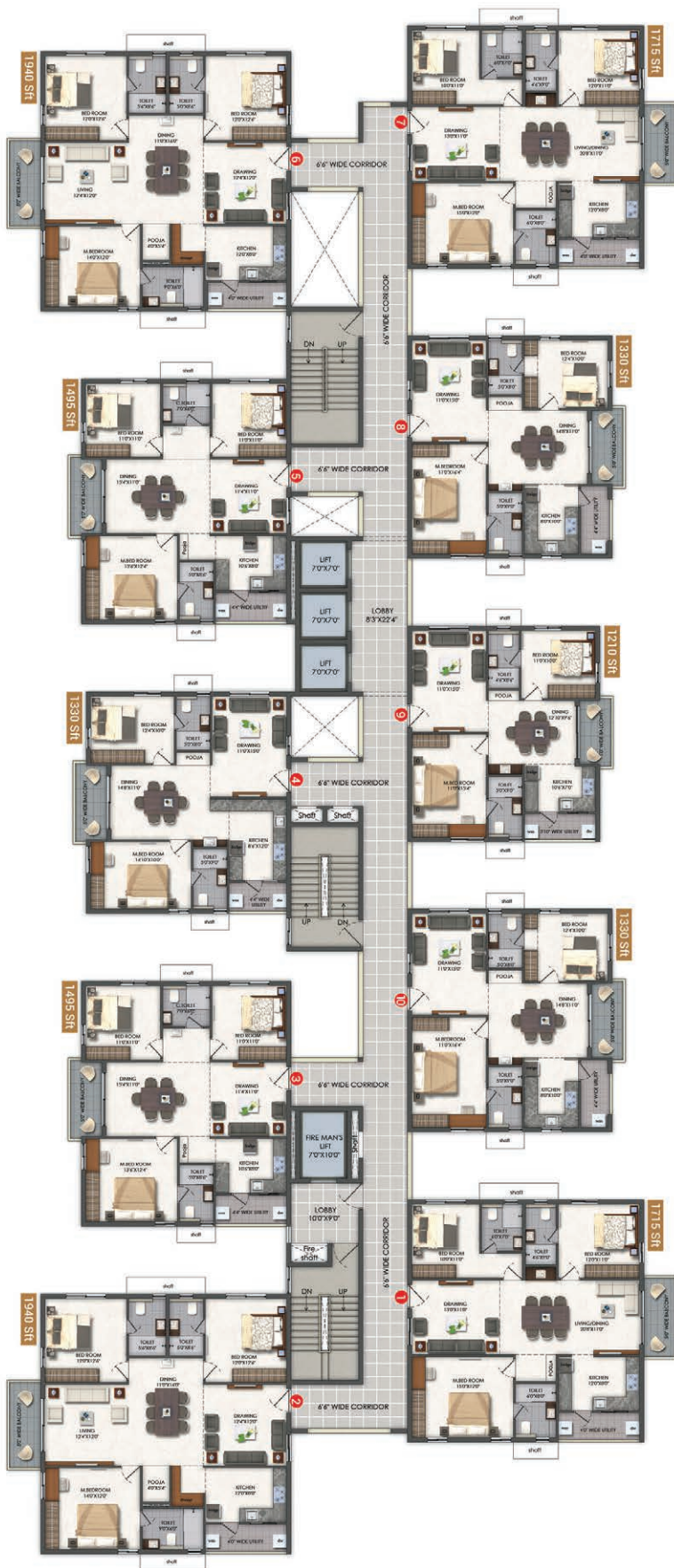
Life is a celebration of festivities, culture, moments, and successes. At Ameya, we understand this need to celebrate happiness and provide the right environment in the form of spacious banquet halls, party lawns, amphitheatre, and much more.



Block E (Typical Area Statement)

Flat No	Area (sft)	Facing	BHK
1	1715	WEST	3 BHK
2	1715	EAST	3 BHK
3	1330	EAST	2 BHK
4	1330	EAST	2 BHK
5	1625	EAST	3 BHK
6	1715	WEST	3 BHK
7	1330	WEST	2 BHK
8	1330	WEST	2 BHK

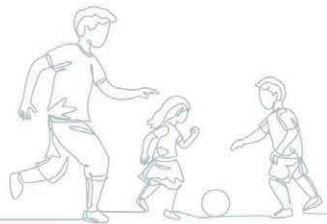




Block F (Typical Area Statement)

Flat No	Area (sft)	Facing	BHK
1	1715	WEST	3 BHK
2	1940	EAST	3 BHK
3	1495	EAST	2.5 BHK
4	1330	EAST	2 BHK
5	1495	EAST	2.5 BHK
6	1940	EAST	3 BHK
7	1715	WEST	3 BHK
8	1330	WEST	2 BHK
9	1210	WEST	2 BHK
10	1330	WEST	2 BHK





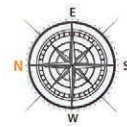
Chetan Anand Badminton Academy
right in front of our community



LET THE
YOUNG
FLY HIGH



From a daycare and enrichment centre for toddlers to a temperature-controlled pool for kids, Ameya has been designed to satisfy the curiosity, competitive spirit, and energy of children.



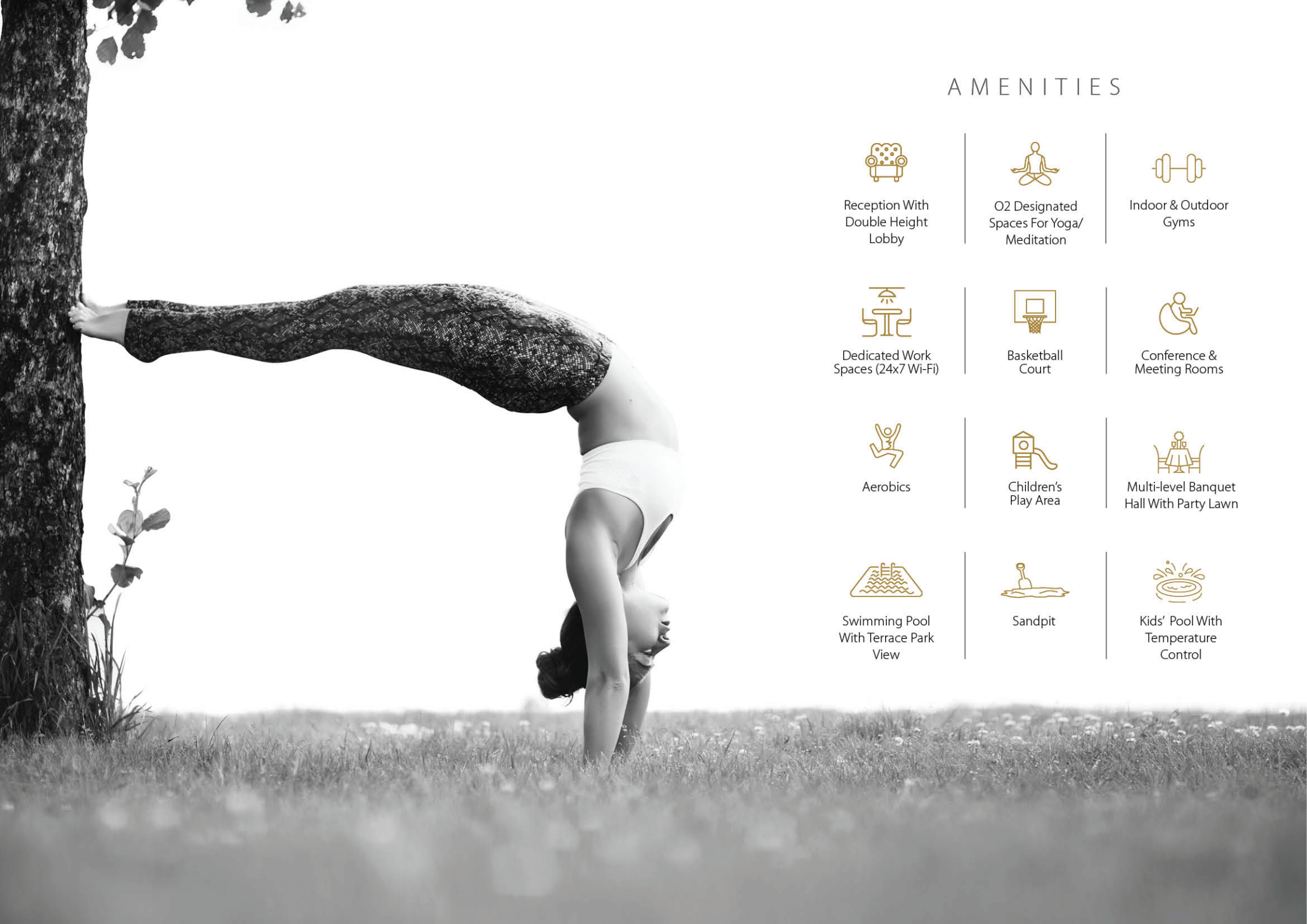
Block I (Typical Area Statement)

Flat No	Area (sft)	Facing	BHK
1	1940	WEST	3 BHK
2	1625	EAST	3 BHK
3	1330	EAST	2 BHK
4	1330	EAST	2 BHK
5	1625	EAST	3 BHK
6	1940	WEST	3 BHK
7	1625	WEST	3 BHK
8	1625	WEST	3 BHK



50,000+ SFT OF PURE
ENGAGEMENT IN 5 FLOORS





AMENITIES



Reception With
Double Height
Lobby



O2 Designated
Spaces For Yoga/
Meditation



Indoor & Outdoor
Gyms



Dedicated Work
Spaces (24x7 Wi-Fi)



Basketball
Court



Conference &
Meeting Rooms



Aerobics



Children's
Play Area



Multi-level Banquet
Hall With Party Lawn



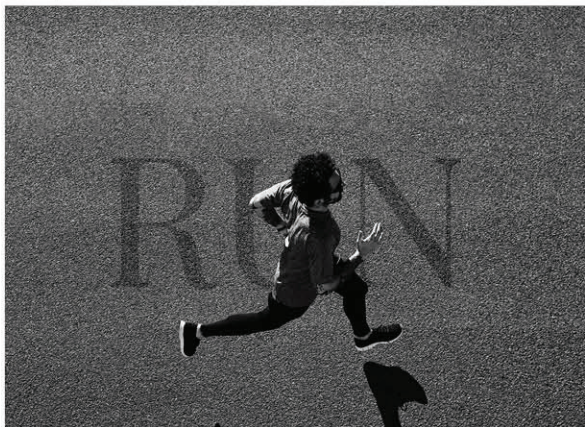
Swimming Pool
With Terrace Park
View



Sandpit



Kids' Pool With
Temperature
Control



Badminton &
Squash Courts



Box Cricket /
Volleyball



1km Long
Jogging Track



Indoor Games
(Carrom, Chess, TT,
Snooker)



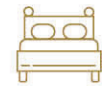
Day Care &
Enrichment Centre
For Kids



Health Healing
Club



Movie Theatre



Guest Rooms



Dedicated
Culture Center



Party Lawn



Spa, Salon &
Parlour



Seating Pockets
And Tree Avenue



Coffee Shop



Grocery Store

SPECIFICATIONS



STRUCTURE

R.C.C. framed structure with solid or AAC blocks

SUPER STRUCTURE

8" thick solid block work for external walls & 4" thick solid block work for internal walls.



FLOORING

- **Living & Dining**
800X800 mm sized double charged vitrified tiles of reputed make with spacer joints
- **Bedrooms & Kitchen**
800X800 mm size double charged vitrified tiles of reputed make with spacer joints
- **Balconies**
Anti-skid ceramic tiles of the best brand



DOORS AND WINDOWS

- **Main Door**
Engineered/Hardwood frame finished with melamine sprayfinish on veneered flush shutters with reputed hardware of brand Sobha or equivalent make.
- **Internal Doors**
Engineered/Hardwood door frame & laminate shutter and hardware of reputed make
- **French Doors**
UPVC door frames with float glass panelled sliding shutters with provision for mosquito mesh track
- **Windows**
UPVC window glazing system with sliding/casement shutters with provision for mosquito mesh track



PAINTING

- **Internal**
Smooth putty finish with 2 coats of premium acrylic emulsion paint of reputed make over a coat of primer
- **External**
Textured finish and 2 coats of exterior emulsion paint of reputed make



TILE CLADDING & DADOING

- **Bathrooms**
Glazed / matt finish ceramic tiles dado up to 7' height
- **Dadoing in Kitchen**
Glazed ceramic tiles dado upto 2' height above kitchen platform (optional)



KITCHEN

- Separate municipal water tap (manjeera or any other water provided by GHMC along with bore well water)
- Provision for fixing of water purifier, exhaust fan & chimney
- Utility/wash area-provision for washing machine, dishwasher & wet area for washing utensils etc.



TELECOM

- Intercom facility to all the units connecting security and neighbourhood
- Telephone points in living room and master bedroom



BATHROOMS

- EWC with vertical stack flushing system
- Provision for geysers in all bathrooms
- All CP fittings by Kohler/Grohe/equivalent
- Sanitary by Kohler/Duravit/equivalent



ELECTRICAL

- Power outlets for air conditioners in living, dining and bedrooms
- Power outlet for geysers in all bathrooms
- Power plug for hob, chimney, refrigerator, microwave oven, mixer/grinder in kitchen, washing machine/dishwasher in utility area
- Three phase supply for each unit and individual prepaid metres
- Miniature Circuit Breakers (MCB) for each distribution board of reputed make
- Modular switches of reputed make



POWER BACKUP

100% D.G backup with acoustic enclosure



CABLE TV

Provision for cable connection in living room and in all bedrooms



INTERNET

Provision for internet connection in living room and master/all bedrooms



LPG / PNG

Supply of LPG/ PNG with piped gas system



WASTE MANAGEMENT

Dedicated garbage chutes will be provided for every tower, on each floor level and is centrally collected at the basement in the garbage room



SECURITY/BMS

- Sophisticated round-the-clock security/surveillance system
- BMS for electricity consumption with prepaid card system will be provided (centralized billing)
- Surveillance cameras at the main security and entrance of each block as well as inside the lifts
- Panic button and intercom in the lifts connected to the security room
- Solar powered fencing around the compound



LIFTS

- High speed automatic elevators of reputed make with rescue device and V3F for energy efficiency. Granite/tile cladding for lift entrance
- 1 service elevator for each block of reputed make with rescue device and V3F for energy efficiency. Granite/tile cladding on lift entrance



WTP & STP

- Fully treated water will be made available through an exclusive water softening plant
- Hydro-pneumatic system for even pressure water supply at all floors
- A sewage treatment plant of adequate capacity inside the project, treated sewage water will be used for landscaping and flushing purpose
- Rain water harvesting at regular intervals provided for spacing recharging ground water levels



FIRE & SAFETY

- Fire hydrant and fire sprinkler system on all floors and basements
- Fire alarm and Public Address system on all floors and basements



BILLING SYSTEM

Automated billing system for water, power & LPG/CNG supply

Location Map (not to scale)

Scan for Location



Location Advantages

Educational Institutions:

Vikas The Concept School - 3 Mins
 Senita The Global School - 5 Mins
 Kennedy The Global School - 5 Mins
 Sanford The Global School - 5 Mins
 Silver Oaks School - 5 Mins | Oakridge
 International School - 15 Mins

Hospitals:

SLG Hospitals - 5 Mins
 Mamata Academy of Medical Sciences -
 5 Mins | Landmark Hospitals - 10 Mins
 Ankura Hospitals - 10 Mins
 Rainbow Children's Hospital - 10 Mins
 KIMS Hospital - 15 Mins

Entertainment & Shopping:

GSM Mall - 10 Mins | Manjeera Mall
 - 15 Mins | Forum Mall - 15 Mins |
 Sarath City Capital Mall - 20 Mins | IKEA
 : 25 Mins

Transportation: Miyapur Bus Depot - 5
 Mins | Miyapur Metro Station - 10 Mins
 Lingampally Railway Station - 20 Mins



We've Brought Together The Best To Ensure You Get The Best

A home is a commitment that shelters our loved ones. It's a space that's home to a lifetime of memories. And so, we believe that it's essential that your dream home is designed and built by the best in the business.

We've brought together the pioneers from every field to ensure that your dream home at Ameya can stand the test of time, and be your shelter of luxury and comfort, for generations to come.

Architects



MEP Consultants



Structural Consultants



Landscape Consultants



For more info call: +91 99 6676 4646